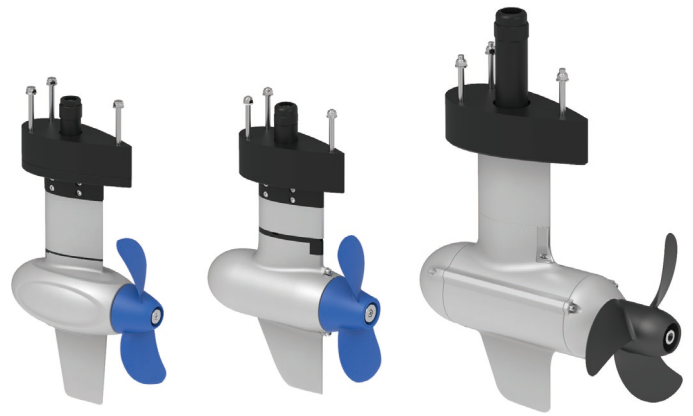


# Electric Pod Drives

-  Virtually Silent
-  Maintenance-Free
-  No Exhaust
-  No Greasy Dirt



**Pod Drive 1.0 Evo**  
3HP

**Pod Drive 3.0 Evo**  
6HP

**Pod Drive 6.0 Evo**  
9.9HP

## Direct-Drive

Direct drive motors don't require a gearbox to achieve the necessary torque, which means fewer moving parts and a simple mechanical structure. The advantages are smaller size, less noise and higher reliability.



## Hydrogeneration

Capture the power your sailboat generates while being propelled by the wind. Hydrogeneration is a proven way to reduce or eliminate fossil-fuel charging while sailing.



## Specs

	Pod Drive 1.0 Evo	Pod Drive 3.0 Evo	Pod Drive 6.0 Evo
Power	1kW / 3HP	3kW / 6HP	6kW / 9.9HP
Operation Voltage	48V (Input Range 39V - 60V)		
Weight	6.2 kg / 13.6 lbs	15.3 kg / 33.7 lbs	31kg / 70.4lbs
Propeller	11" x 5.8" 2-blade, composite propeller	10.2" x 6.7" 2-blade, composite propeller	12.6" x 8.7" 3-blade, aluminum propeller
Static Thrust	316 N / 71 lbs	590 N / 132.6 lbs	1000 N / 224.8 lbs
Rated RPM	1200 rpm	2300 rpm	1500 rpm
Hydrogeneration	✓	✓	✓

\*Weight data includes the driver box.

# Electric Pod Drives **3HP - 9.9HP**

## 48V E-Series Lithium Battery

Original ePropulsion lithium battery made for Pod Drive Evo outboards.



E40 2kWh



E80 4kWh



E175 9kWh



**Competitive Price**  
The unit price is as low as \$0.5 per watt-hour.



**High Energy Density**  
70% less weight and space than lead-acid batteries.



**Ultralong Lifespan**  
3000 cycles at 80% DOD.



**ePropulsion Original**  
Data sync with ePropulsion outboards to apply smart operation strategy.

\*The actual battery capacity varies slightly.

## Evo Controls

You could always find a control that best fits your boat.



Evo Top Mount Control



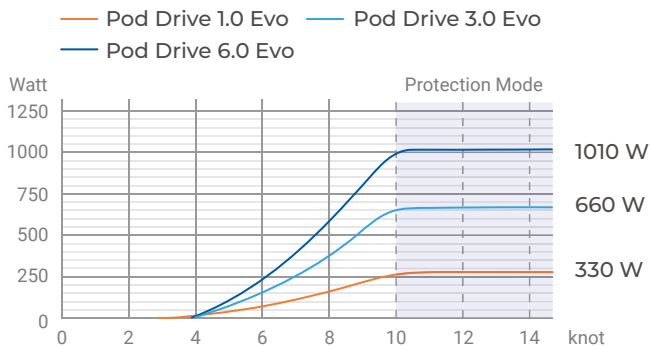
Evo Side Mount Control



Evo Dual Control

## Hydrogeneration Output

Pod Drive Evo feature hydrogeneration and empower sailors to use renewable energy.



\*The hydrogeneration data is based on real tests with the anti-ventilation plate installed.  
\*Pod Drive Evo is tested with the 12.6" x 8.7" three-blade aluminum propeller.

## Safety Wristband

In the case of man overboard, the safety wristband will shut down Pod Drive immediately. Pod Drive can connect with up to 8 safety wristbands.



## Performance Sheet

**Pod Drive 1.0 Evo** The data is based on a 20ft sailboat with one person and one Spirit battery in calm lake water.

Power (W)	Speed (mph / kph)	Runtime (hh:mm)	Range (mile / km)
35	1.7 / 2.7	28:35	49.1 / 78.5
65	2.2 / 3.5	15:20	33.8 / 54.2
125	3.1 / 5	8:00	24.8 / 39.7
250	3.5 / 5.6	4:00	14 / 22.4
500	4.8 / 7.7	2:00	9.6 / 15.4
750	5 / 8	1:20	6.7 / 10.7
1000	5.5 / 8.9	1:00	5.5 / 8.9

**Pod Drive 3.0 Evo** The data is based on a 24ft sailboat with one person and one E80 battery in calm lake water.

Power (W)	Speed (mph / kph)	Runtime (hh:mm)	Range (mile / km)
300	3.1 / 5	13:20	42.3 / 68.2
550	4 / 6.4	7:25	29.8 / 47.7
1000	4.7 / 7.6	4:00	18.8 / 30.4
1500	5.4 / 8.7	2:40	14.7 / 23.6
2000	6.1 / 9.8	2:00	12.2 / 19.5
2500	6.7 / 10.8	1:35	11 / 17.6
3000	7.2 / 11.6	1:20	9.8 / 15.7

**Pod Drive 6.0 Evo** The data is based on a 30ft sailboat with one person and one E175 battery in calm lake water.

Power (W)	Speed (mph / kph)	Runtime (hh:mm)	Range (mile / km)
500	4 / 6.4	18:00	72 / 115
1000	4.9 / 7.6	9:00	44.1 / 70.6
2000	5.8 / 9.3	4:30	26.1 / 41.8
3000	6.5 / 10.5	3:00	19.5 / 31.2
4000	7.1 / 11.4	2:15	15.9 / 25.4
5000	7.6 / 12.2	1:50	13.6 / 21.8
6000	8 / 12.9	1:30	12 / 19.2

\*The actual speed, range, and running time may vary because of different boats, load, weather and water conditions, etc.